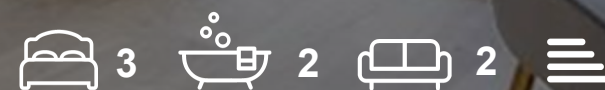


ASHTON  WHITE  
*Leading the way home*

Plot 20 Oak View Southend Road, Billericay CM11 2PP  
£585,000



# Plot 20 Oak View Southend Road Billericay CM11 2PP £525 000

Plot 20, The Stanford is a stylish three bedroom semi-detached home. **\*\*SHOW HOMES NOW LAUNCHED - CONTACT US TO BOOK YOUR PERSONAL VIEWING\*\***

Now launched is Oak View in partnership with David Wilson Homes - contact us today and be amongst the first to discover these exceptional new homes.

Oak View, Billericay - Contemporary Living in a Peaceful Setting.

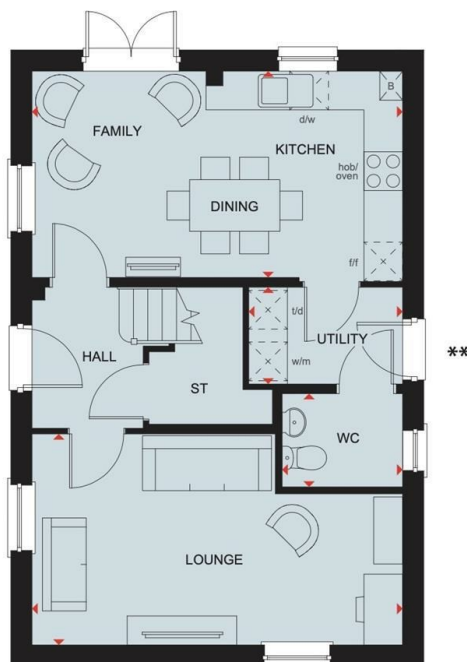
An exclusive collection of beautifully crafted 3, 4 & 5 bedroom homes nestled within a private cul-de-sac in the desirable town of Billericay, Essex. Surrounded by open green spaces and thoughtfully designed landscaping, this new development offers the perfect balance of comfort, quality, and tranquillity.

Located just 23 miles from London, Billericay provides the ideal blend of countryside charm and modern convenience. The town is home to a vibrant mix of independent shops, excellent schools, and inviting eateries, alongside a wealth of outdoor pursuits and scenic walks - creating a lifestyle that appeals to families and professionals alike.

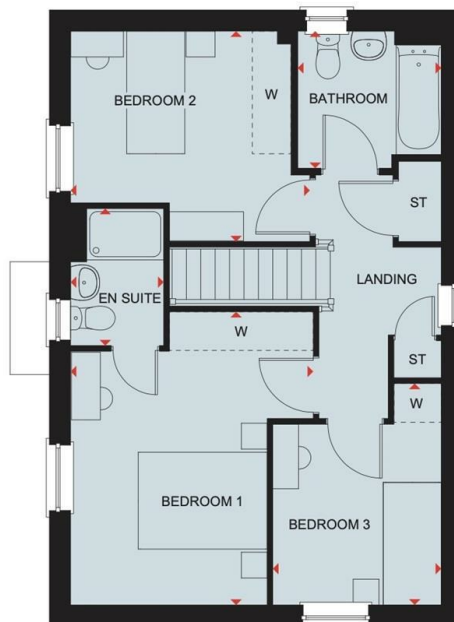
Built by David Wilson Homes, a developer renowned for their craftsmanship and attention to detail, each property at Oak View reflects the highest standards of design and finish. Their long-standing commitment to quality has earned them a 5-Star rating from the Home Builders Federation every year since 2010 - a mark of trust that ensures you can buy your new home with confidence.



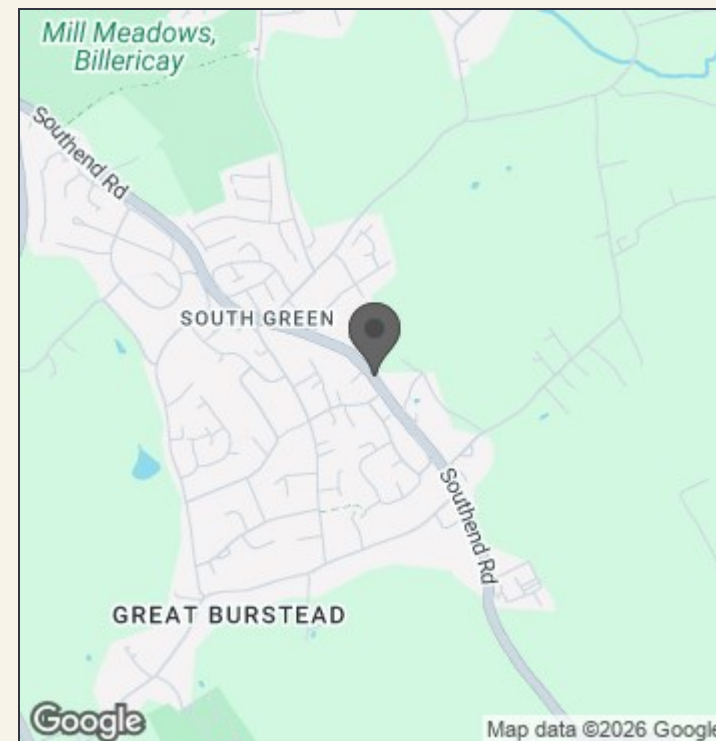





**GROUND FLOOR**



**FIRST FLOOR**



Energy Efficiency Rating		
	Current	Potential
Very energy efficient - lower running costs		
(92 plus) <b>A</b>		
(81-91) <b>B</b>		
(69-80) <b>C</b>		
(55-68) <b>D</b>		
(39-54) <b>E</b>		
(21-38) <b>F</b>		
(1-20) <b>G</b>		
Not energy efficient - higher running costs		
<b>England &amp; Wales</b>	EU Directive 2002/91/EC 	



**140 High Street**  
**Billericay**  
**Essex**  
**CM12 9DF**  
**tel: 01277 659002**  
**Email: [admin@ashtonwhite.co.uk](mailto:admin@ashtonwhite.co.uk)**  
**<https://www.ashtonwhite.co.uk>**

**VIEWING:** Strictly by prior arrangement with Ashton White Estate Agents.

THESE PARTICULARS DO NOT CONSTITUTE ANY OFFER OF CONTRACT EITHER DIRECT OR COLLATERAL NOR ARE THEY TO BE ACTED UPON AS REPRESENTATIONS. ALL INTERESTED PARTIES MUST THEMSELVES VERIFY THE ACCURACY OF THESE PARTICULARS.